

PROPOSED EASEMENTS IN GROSS				PROPOSED EASEMENT SCHEDULE			
PURPOSE	SHOWN	SERV.TENE. (BURDENED)	GRANTEE	PURPOSE	SHOWN	SERV.	DOM.TENE.
RIGHT TO TRANSMIT ELECTRICITY & TELECOM.	(P)	LOT 3 DP 436342	N'POWER LTD & N'POWER FIBRE LTD	RIGHT OF WAY	(C)	LOT 13 HEREON	LOTS 8-10 HEREON
	(A)	LOT 200 HEREON			(D)	LOT 10 HEREON	LOT 9 HEREON
	(B)	LOT 100 HEREON			(G)	LOT 200 HEREON	LOT 20 HEREON
	(C)	LOT 13 HEREON		RIGHT OF WAY AND RIGHT TO DRAIN SEWAGE	(B)	LOT 100 HEREON	LOT 25 HEREON
	(D)(EP)	LOT 10 HEREON			(C)	LOT 13 HEREON	LOTS 11, 12, 14 & 15 HEREON
	(G)(J)	LOT 200 HEREON			(D)	LOT 10 HEREON	LOTS 11 - 12 HEREON
	(H)	LOT 28 HEREON			(E)(EP)	LOT 10 HEREON	LOTS 12 - 15 HEREON
	(PU)	LOT 1 HEREON		RIGHT TO DRAIN SEWAGE	(T)	LOT 200 HEREON	LOTS 10 - 15 HEREON
	(PA)	LOT 2 HEREON			(U)(UB)	LOT 200 HEREON	LOTS 2-5 & 7-15 HEREON
	(PE)	LOT 4 HEREON			(PA)(UC)	LOT 2 HEREON	LOTS 3 - 5 & 7-15 HEREON
	(PF)	LOT 5 HEREON			(L)	LOT 200 HEREON	LOTS 2 - 5 & 7-15 HEREON
	(PG)	LOT 7 HEREON			(Y)	LOT 200 HEREON	LOTS 8 & 9 HEREON
	(PQ)	LOT 8 HEREON			(B)(K)	LOT 100 HEREON	LOTS 24 & 25 HEREON
	(PR)	LOT 9 HEREON			(VA)	LOT 100 HEREON	LOT 24 HEREON
	(PT)	LOT 12 HEREON			(N)	LOT 102 HEREON	LOT 1 HEREON
	(PS)	LOT 13 HEREON			(YA)	LOT 7 HEREON	LOTS 8 & 9 HEREON
	(PP)	LOT 14 HEREON			(D)	LOT 10 HEREON	LOTS 13-15 HEREON
(PO)	LOT 15 HEREON	FOR FIRE FIGHTING SUPPLY RIGHT	(X)		LOT 100 HEREON	LOTS 2 - 5, 24 & 25 HEREON	
(PC)	LOT 24 HEREON		(ZA)		LOT 200 HEREON	LOTS 5 & 7-15 HEREON	
(B)	LOT 100 HEREON		(Z)		LOT 200 HEREON	LOTS 7 - 15 & 20 HEREON	

NO BUILD AREA
TOTAL: 8.1124 Ha
LOT 200: 5.2071 Ha

AREAS MARKED A, F, G, J, L, R, T, U, Y, Z, AC, BC, BE, FA - FD, NB, RA, UB, WA, WB & ZA

LOT 102: 0.2560 Ha
 AREAS MARKED N, S & AE

LOT 100: 2.6493Ha
 AREAS MARKED B, K, M, MA, V, VA & X

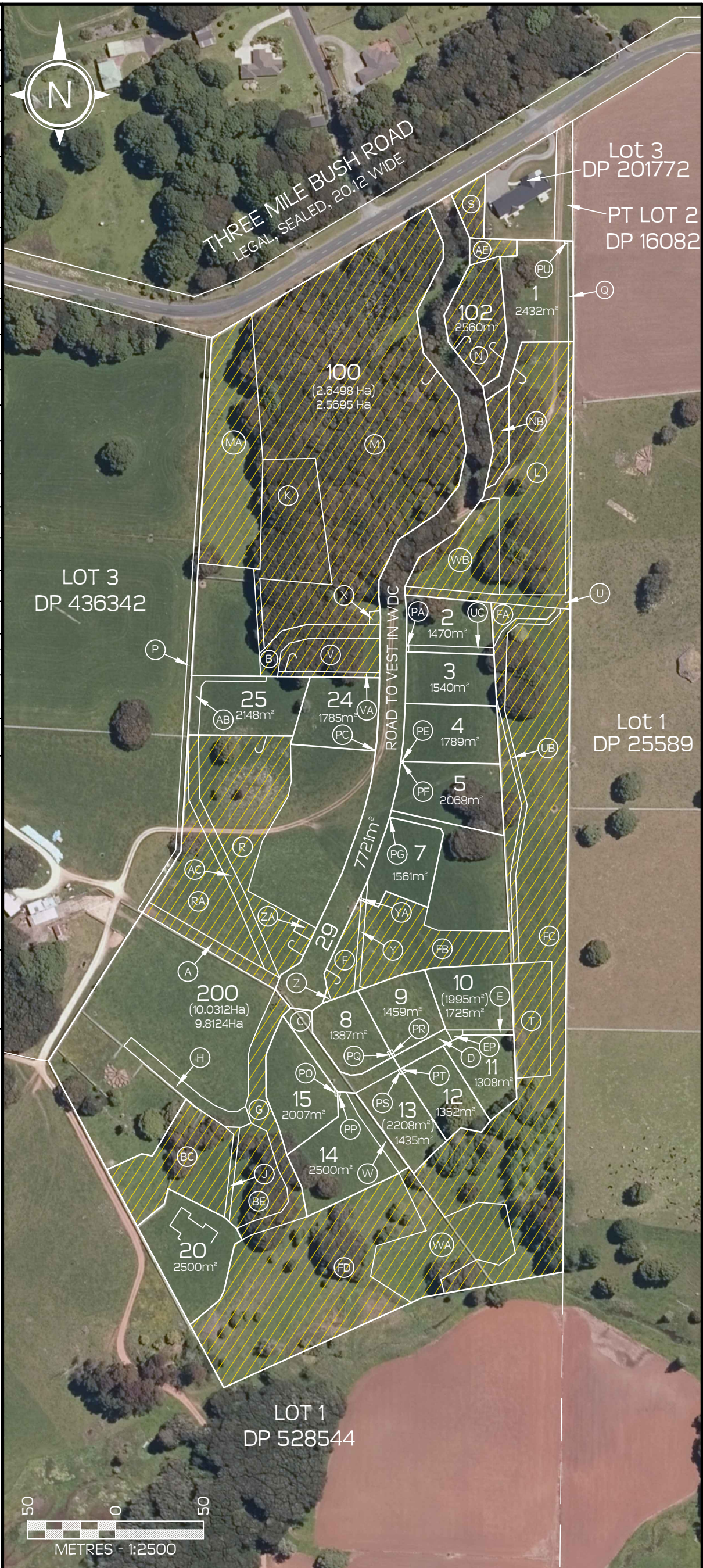
PROPOSED AMALGAMATION CONDITION
 PURSUANT TO SECTION 220 (1)(b)(i) & (iii) OF THE RMA 1991
 THAT 100, 102 & 200 HEREON BE HELD IN THE SAME RECORD OF TITLE.

PROPOSED CONSERVATION COVENANTS PURSUANT TO S77 RESERVES ACT 1977		
SHOWN	UNDERLYING PARCEL	AREA
M	LOT 100 HEREON	1.7718 Ha
K	LOT 100 HEREON	0.2622 Ha
V	LOT 100 HEREON	0.1400 Ha
NB	LOT 200 HEREON	0.0545 Ha
AE	LOT 102 HEREON	0.0305 Ha
N	LOT 102 HEREON	0.1800 Ha
S	LOT 102 HEREON	0.0460 Ha

CAUTION:

- THIS DRAWING SHOULD NOT BE AMENDED MANUALLY.
- AREAS & DIMENSIONS ARE APPROXIMATE ONLY AND ARE SUBJECT TO FINAL SURVEY.
- THE VENDOR & PURCHASER MUST CONTACT THE SURVEYOR IF SALE & PURCHASE AGREEMENTS ARE ENTERED INTO USING THIS PLAN.
- SERVICES MUST NOT BE POSITIONED USING THIS PLAN.
- DO NOT SCALE OFF DRAWINGS.
- THIS PLAN IS COPYRIGHT TO REYBURN & BRYANT (1999) LIMITED.
- DESIGNED BY REYBURN & BRYANT - WHANGAREI - NEW ZEALAND
- 04m 2014-2016 RURAL AERIAL SOURCED FROM AERIAL SURVEYS LTD INFORMATION AVAILABLE ON LINZ DATA SERVICE.
- BOUNDARIES SOURCED FROM QUICKMAP. COORDINATES IN TERMS OF MOUNT EDEN 2000.

TOTAL AREA: 14.0600 Ha
COMPRISED IN: RT 854407
 THIS SITE IS ZONED 'UTE' AND THE BUILDING SETBACKS ARE THUS: 20m FROM ROAD BOUNDARIES, 50m MAXIMUM FROM ANOTHER BUILDING OR BUILDING SITE.



SHEET SCHEDULE		
OVERALL	-	SHEET 01
STAGE 1	-	SHEET 02
STAGE 2	-	SHEET 03

DATE	JUNE 2020	SCALE	1:2500 @A3
NO.	S14744	SHEET	2/3
		REV.	U

TITLE
STAGE 1
PROPOSED SUBDIVISION
OF LOT 2 DP 528544 & PROPOSED EASEMENT
OVER LOT 3 DP 436342

CLIENT
 McGregor
 422 THREE MILE BUSH ROAD,
 KAMO, WHANGAREI

U	08.07.20	CHANGED EASEMENTS - PL/MW
T	22.06.20	ADD CONS COVTS & CHANGE LOT 23 - PL/SB/MW
S	29.06.20	ADJUSTED K & EASEMENTS - PL/MW
B	05.12.17	REDESIGN - CC/SB
REV	DATE	DESCRIPTION

REF. DATA : 14794

reyburn & bryant

Ph: 09 438 3563 PO Box 191, Whangarei 0140
 7 Selwyn Ave, Whangarei www.reyburnandbryant.co.nz

LOCAL AUTHORITY: WHANGAREI DISTRICT COUNCIL