

PROPOSED EASEMENTS IN GROSS				PROPOSED EASEMENT SCHEDULE			
PURPOSE	SHOWN	SERV.TENE. (BURDENED)	GRANTEE	PURPOSE	SHOWN	SERV.	DOM.TENE.
RIGHT TO TRANSMIT ELECTRICITY & TELECOM.	(P)	LOT 3 DP 436342	N'POWER LTD & N'POWER FIBRE LTD	RIGHT OF WAY	(C)	LOT 13 HEREON	LOTS 8 - 10, 14 & 15 HEREON
	(A)	LOT 101 HEREON			(D)	LOT 10 HEREON	LOT 9 HEREON
	(B)	LOT 100 HEREON			(G) (BF)	LOT 6 HEREON	LOT 20 HEREON
	(C)	LOT 13 HEREON		(B)	LOT 100 HEREON	LOTS 25 & 26 HEREON	
	(D) (EP)	LOT 10 HEREON		(C)	LOT 13 HEREON	LOTS 11 & 12 HEREON	
	(G) (J)	LOT 6 HEREON		(D)	LOT 10 HEREON	LOTS 11 & 12 HEREON	
	(BF)			(G)	LOT 6 HEREON	LOTS 16 - 19, 27 & 28 HEREON	
	(H)	LOT 28 HEREON		(H)	LOT 28 HEREON	LOTS 18, 19, & 27 HEREON	
	(PU)	LOT 1 HEREON		(VA)	LOT 100 HEREON	LOTS 21 - 24 HEREON	
	(PA)	LOT 2 HEREON		(B) (K)	LOT 100 HEREON	LOTS 21 - 25 HEREON	
	(PE)	LOT 4 HEREON		(E) (EP)	LOT 10 HEREON	LOTS 12 - 13 HEREON	
	(PF)	LOT 5 HEREON		(T)	LOT 6 HEREON	LOTS 10 - 13 HEREON	
	(PG)	LOT 7 HEREON		(U) (UB)	LOT 6 HEREON	LOTS 2 - 5 & 7 - 13 HEREON	
	(PQ)	LOT 8 HEREON		(PA) (UC)	LOT 2 HEREON	LOTS 3 - 5 & 7 - 13 HEREON	
	(PR)	LOT 9 HEREON		(L)	LOT 6 HEREON	LOTS 2 - 5 & 7 - 13 HEREON	
	(PT)	LOT 12 HEREON		(Y)	LOT 6 HEREON	LOTS 8 & 9 HEREON	
	(PS)	LOT 13 HEREON		(N)	LOT 102 HEREON	LOT 1 HEREON	
	(PP)	LOT 14 HEREON		(J) (BC) (BE)	LOT 6 HEREON	LOTS 16 - 19, 27 & 28 HEREON	
	(PO)	LOT 15 HEREON		(YA)	LOT 7 HEREON	LOTS 8 & 9 HEREON	
	(PJ)	LOT 16 HEREON		(D)	LOT 10 HEREON	LOT 13 HEREON	
	(BA) (PK)	LOT 17 HEREON		(AD)	LOT 6 HEREON	LOTS 16 - 19, 27 & 28 HEREON	
	(BB)	LOT 18 HEREON		(X)	LOT 100 HEREON	LOTS 2 - 5 & 23 - 26 HEREON	
	(PM)	LOT 19 HEREON		(Z)	LOT 6 HEREON	LOTS 7 - 19 HEREON	
	(PI)	LOT 21 HEREON		(ZA)	LOT 101 HEREON	LOTS 7 - 15, 21 & 22 HEREON	
	(PH)	LOT 22 HEREON		<div style="display: flex; align-items: center;"> <div style="width: 15px; height: 15px; background-color: #ccc; border: 1px solid #000; margin-right: 5px;"></div> <div> <p>NO BUILD AREA TOTAL: 8.1124Ha</p> <p>LOT 6: 4.4255 Ha AREAS MARKED F, G, J, L, T, U, Y, Z, AD, BC - BF, FA - FD, NB, UB, WA & WB</p> <p>LOT 100: 2.6498 Ha AREAS MARKED B, K, M, MA, V, VA & X</p> <p>LOT 101: 0.7816 Ha AREAS MARKED A, R, AC, RA & ZA</p> <p>LOT 102: 0.2560 Ha AREAS MARKED N, S & AE</p> </div> </div>			
	(PD)	LOT 23 HEREON					
	(PC)	LOT 24 HEREON					
	(PN)	LOT 27 HEREON					
(PZ)	LOT 28 HEREON						
(B)	LOT 100 HEREON						
(AE)	LOT 102 HEREON						
(AA)	LOT 26 HEREON						
RIGHT TO DRAIN WATER	(AB)	LOT 25 HEREON	WDC				
	(AC) (A)	LOT 101 HEREON					
	(C)	LOT 13 HEREON					
RIGHT TO CONVEY WATER & RIGHT TO DRAIN SEWAGE	(W)	LOT 14 HEREON					
	(WA)	LOT 6 HEREON					
(Q)	LOT 1 HEREON						
(U)	LOT 6 HEREON						



PROPOSED AMALGAMATION CONDITION
PURSUANT TO SECTION 220 (i)(b)(ii) & (iii) OF THE RMA 1991 THAT LOTS 6, 100, 101 & 102 HEREON BE HELD IN THE SAME RECORD OF TITLE.

TOTAL AREA: 14.0600 Ha
COMPRISED IN: RT 854407
THIS SITE IS ZONED 'UTE' AND THE BUILDING SETBACKS ARE THUS: 20m FROM ROAD BOUNDARIES, 50m MAXIMUM FROM ANOTHER BUILDING OR BUILDING SITE.

PROPOSED CONSERVATION COVENANTS PURSUANT TO s77 RESERVES ACT 1977		
SHOWN	UNDERLYING PARCEL	AREA
NB	LOT 6 HEREON	0.0545 Ha
AE	LOT 102 HEREON	0.0305 Ha
N	LOT 102 HEREON	0.1800 Ha
S	LOT 102 HEREON	0.0460 Ha
V	LOT 100 HEREON	0.1400 Ha
M	LOT 100 HEREON	1.7718 Ha
K	LOT 100 HEREON	0.2622Ha

- CAUTION:**
- THIS DRAWING SHOULD NOT BE AMENDED MANUALLY.
 - AREAS & DIMENSIONS ARE APPROXIMATE ONLY AND ARE SUBJECT TO FINAL SURVEY.
 - THE VENDOR & PURCHASER MUST CONTACT THE SURVEYOR IF SALE & PURCHASE AGREEMENTS ARE ENTERED INTO USING THIS PLAN.
 - SERVICES MUST NOT BE POSITIONED USING THIS PLAN.
 - DO NOT SCALE OFF DRAWINGS.
 - THIS PLAN IS COPYRIGHT TO REYBURN & BRYANT (1999) LIMITED.
 - DESIGNED BY REYBURN & BRYANT - WHANGAREI - NEW ZEALAND
 - 04m 2014-2016 RURAL AERIAL SOURCED FROM AERIAL SURVEYS LTD INFORMATION AVAILABLE ON LINZ DATA SERVICE.
 - BOUNDARIES SOURCED FROM QUICKMAP. COORDINATES IN TERMS OF MOUNT EDEN 2000.

SHEET SCHEDULE		
OVERALL	-	SHEET 01
STAGE 1	-	SHEET 02
STAGE 2	-	SHEET 03

DATE	AUGUST 2020	SCALE	1:2500 @A3
NO.	S14744	SHEET	1/3
		REV.	V

OVERALL
PROPOSED SUBDIVISION
OF LOT 2 DP 528544 & PROPOSED EASEMENT
OVER LOT 3 DP 436342

CLIENT
McGregor
422 THREE MILE BUSH ROAD,
KAMO, WHANGAREI

REV	DATE	DESCRIPTION
V	21.08.20	CHANGED EASEMENTS - PL/MW
U	08.07.20	CHANGED EASEMENTS - PL/MW
T	22.06.20	ADD CONS COVTS & CHANGE LOT 23 - PL/SB/MW
B	05.12.17	REDESIGN - CC/SB

REF. DATA : 14794

reyburn & bryant

Ph: 09 438 3563 PO Box 191, Whangarei 0140
7 Selwyn Ave, Whangarei www.reyburnandbryant.co.nz

LOCAL AUTHORITY: WHANGAREI DISTRICT COUNCIL

PROPOSED EASEMENTS IN GROSS				PROPOSED EASEMENT SCHEDULE			
PURPOSE	SHOWN	SERV.TENE. (BURDENED)	GRANTEE	PURPOSE	SHOWN	SERV.	DOM.TENE.
RIGHT TO TRANSMIT ELECTRICITY & TELECOM.	(P)	LOT 3 DP 436342	N'POWER LTD & N'POWER FIBRE LTD	RIGHT OF WAY	(C)	LOT 13 HEREON	LOTS 8 - 10, 14 & 15 HEREON
	(A)	LOT 200 HEREON			(D)	LOT 10 HEREON	LOT 9 HEREON
	(B)	LOT 100 HEREON			(G)	LOT 200 HEREON	LOT 20 HEREON
	(C)	LOT 13 HEREON		(B)	LOT 100 HEREON	LOT 25 HEREON	
	(D)(EP)	LOT 10 HEREON		(C)	LOT 13 HEREON	LOTS 11 & 12 HEREON	
	(G)(J)	LOT 200 HEREON		(D)	LOT 10 HEREON	LOTS 11 & 12 HEREON	
	(H)	LOT 28 HEREON		(E)(EP)	LOT 10 HEREON	LOTS 12 - 13 HEREON	
	(PU)	LOT 1 HEREON		(T)	LOT 200 HEREON	LOTS 10 - 13 HEREON	
	(PA)	LOT 2 HEREON		(U)(UB)	LOT 200 HEREON	LOTS 2 - 5 & 7 - 13 HEREON	
	(PE)	LOT 4 HEREON		(PA)(UC)	LOT 2 HEREON	LOTS 3 - 5 & 7 - 13 HEREON	
	(PF)	LOT 5 HEREON		(L)	LOT 200 HEREON	LOTS 2 - 5 & 7 - 13 HEREON	
	(PG)	LOT 7 HEREON		(Y)	LOT 200 HEREON	LOTS 8 & 9 HEREON	
	(PQ)	LOT 8 HEREON		(B)(K)	LOT 100 HEREON	LOTS 24 & 25 HEREON	
	(PR)	LOT 9 HEREON		(VA)	LOT 100 HEREON	LOT 24 HEREON	
	(PT)	LOT 12 HEREON		(N)	LOT 102 HEREON	LOT 1 HEREON	
	(PS)	LOT 13 HEREON		(YA)	LOT 7 HEREON	LOTS 8 & 9 HEREON	
	(PP)	LOT 14 HEREON		(D)	LOT 10 HEREON	LOT 13 HEREON	
(PO)	LOT 15 HEREON	(X)	LOT 100 HEREON	LOTS 2 - 5, 24 & 25 HEREON			
(PC)	LOT 24 HEREON	(ZA)	LOT 200 HEREON	LOTS 7 - 15 HEREON			
RIGHT TO DRAIN WATER	(B)	LOT 100 HEREON	WDC	FOR FIRE FIGHTING SUPPLY RIGHT	(Z)	LOT 200 HEREON	LOTS 7 - 15 HEREON
	(AE)	LOT 102 HEREON					
	(AB)	LOT 25 HEREON					
	(AC)(A)	LOT 200 HEREON					
	(C)	LOT 13 HEREON					
RIGHT TO CONVEY WATER & RIGHT TO DRAIN SEWAGE	(Q)	LOT 1 HEREON					
	(U)	LOT 200 HEREON					

NO BUILD AREA
TOTAL: 8.1124 Ha
LOT 200: 5.2071 Ha

AREAS MARKED A, F, G, J, L, R, T, U, Y, Z, AC, BC, BE, FA - FD, NB, RA, UB, WA, WB & ZA

LOT 102: 0.2560 Ha
 AREAS MARKED N, S & AE

LOT 100: 2.6498 Ha
 AREAS MARKED B, K, M, MA, V, VA & X

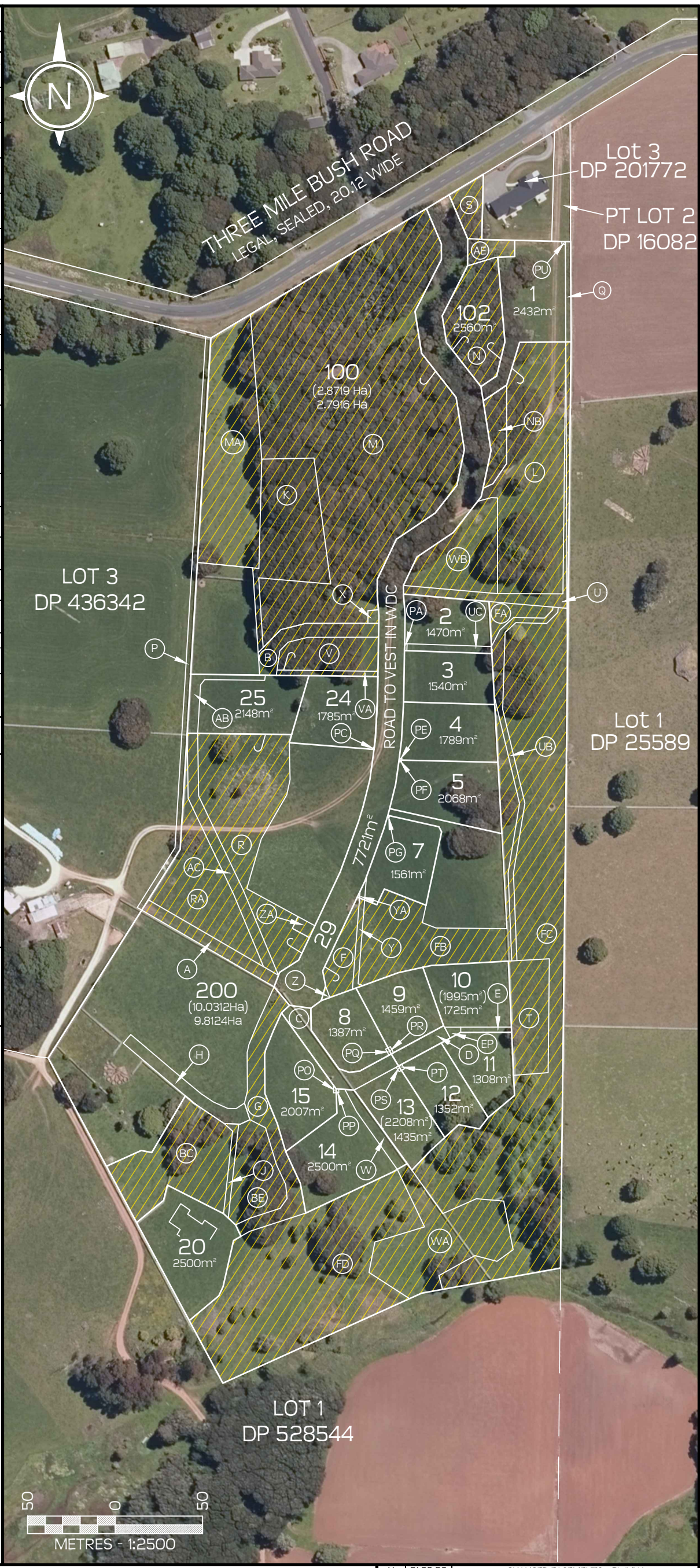
PROPOSED AMALGAMATION CONDITION
 PURSUANT TO SECTION 220 (1)(b)(i) & (iii) OF THE RMA 1991
 THAT 100, 102 & 200 HEREON BE HELD IN THE SAME RECORD OF TITLE.

PROPOSED CONSERVATION COVENANTS PURSUANT TO s77 RESERVES ACT 1977		
SHOWN	UNDERLYING PARCEL	AREA
M	LOT 100 HEREON	1.7718 Ha
K	LOT 100 HEREON	0.2622 Ha
V	LOT 100 HEREON	0.1400 Ha
NB	LOT 200 HEREON	0.0545 Ha
AE	LOT 102 HEREON	0.0305 Ha
N	LOT 102 HEREON	0.1800 Ha
S	LOT 102 HEREON	0.0460 Ha

CAUTION:

- THIS DRAWING SHOULD NOT BE AMENDED MANUALLY.
- AREAS & DIMENSIONS ARE APPROXIMATE ONLY AND ARE SUBJECT TO FINAL SURVEY.
- THE VENDOR & PURCHASER MUST CONTACT THE SURVEYOR IF SALE & PURCHASE AGREEMENTS ARE ENTERED INTO USING THIS PLAN.
- SERVICES MUST NOT BE POSITIONED USING THIS PLAN.
- DO NOT SCALE OFF DRAWINGS.
- THIS PLAN IS COPYRIGHT TO REYBURN & BRYANT (1999) LIMITED.
- DESIGNED BY REYBURN & BRYANT - WHANGAREI - NEW ZEALAND
- 04m 2014-2016 RURAL AERIAL SOURCED FROM AERIAL SURVEYS LTD INFORMATION AVAILABLE ON LINZ DATA SERVICE.
- BOUNDARIES SOURCED FROM QUICKMAP. COORDINATES IN TERMS OF MOUNT EDEN 2000.

TOTAL AREA: 14.0600 Ha
COMPRISED IN: RT 854407
 THIS SITE IS ZONED 'UTE' AND THE BUILDING SETBACKS ARE THUS: 20m FROM ROAD BOUNDARIES, 50m MAXIMUM FROM ANOTHER BUILDING OR BUILDING SITE.



SHEET SCHEDULE		
OVERALL	-	SHEET 01
STAGE 1	-	SHEET 02
STAGE 2	-	SHEET 03

DATE	AUGUST 2020	SCALE	1:2500 @A3
NO.	S14744	SHEET	2/3
		REV.	V

TITLE
STAGE 1
PROPOSED SUBDIVISION
OF LOT 2 DP 528544 & PROPOSED EASEMENT
OVER LOT 3 DP 436342

CLIENT
 McGregor
 422 THREE MILE BUSH ROAD,
 KAMO, WHANGAREI

V	21.08.20	CHANGED EASEMENTS - PL/MW
U	08.07.20	CHANGED EASEMENTS - PL/MW
T	22.06.20	ADD CONS COVTS & CHANGE LOT 23 - PL/SB/MW
B	05.12.17	REDESIGN - CC/SB
REV	DATE	DESCRIPTION
REF. DATA : 14794		

reyburn & bryant
 Ph: 09 438 3563 PO Box 191, Whangarei 0140
 7 Selwyn Ave, Whangarei www.reyburnandbryant.co.nz
 LOCAL AUTHORITY: WHANGAREI DISTRICT COUNCIL

PROPOSED EASEMENTS IN GROSS				PROPOSED EASEMENT SCHEDULE			
PURPOSE	SHOWN	SERV.TENE. (BURDENED)	GRANTEE	PURPOSE	SHOWN	SERV.	DOM.TENE.
RIGHT TO DRAIN WATER	(AA)	LOT 26 HEREON	WDC	RIGHT OF WAY	(B)	LOT 100 HEREON	LOT 26 HEREON
RIGHT TO TRANSMIT ELECTRICITY & TELECOM.	(PJ)	LOT 16 HEREON	N'POWER LTD & N'POWER FIBRE LTD	RIGHT OF WAY AND RIGHT TO DRAIN SEWAGE	(G)	LOT 6 HEREON	LOTS 16 - 19, 27 & 28 HEREON
	(BA)(PK)	LOT 17 HEREON		(H)	LOT 28 HEREON	LOTS 18, 19, & 27 HEREON	
	(BB)	LOT 18 HEREON		(K)	LOT 100 HEREON	LOTS 21 - 23 HEREON	
	(PM)	LOT 19 HEREON		(B)(VA)	LOT 6 HEREON	LOTS 16-19, 27 & 28 HEREON	
	(PI)	LOT 21 HEREON		(J)	LOT 6 HEREON	LOTS 16-19, 27 & 28 HEREON	
	(PH)	LOT 22 HEREON		(BC)(BE)	LOT 6 HEREON	LOTS 16-19, 27 & 28 HEREON	
	(PD)	LOT 23 HEREON		(AD)	LOT 6 HEREON	LOTS 16-19, 27 & 28 HEREON	
	(PN)	LOT 27 HEREON		(X)	LOT 100 HEREON	LOTS 23 & 26 HEREON	
(PZ)	LOT 28 HEREON	(Z)	LOT 6 HEREON	LOTS 16-19 HEREON			
EXISTING EASEMENTS IN GROSS CREATED STAGE 1				EXISTING EASEMENT SCHEDULE CREATED STAGE 1			
PURPOSE	SHOWN	SERV.TENE. (BURDENED)	GRANTEE	PURPOSE	SHOWN	SERV.	DOM.TENE.
RIGHT TO TRANSMIT ELECTRICITY & TELECOM.	(A)	LOT 101 HEREON	N'POWER LTD & N'POWER FIBRE LTD	RIGHT OF WAY	(G)(BF)	LOT 6 HEREON	LOT 20 STAGE 1
RIGHT TO DRAIN WATER	(G)(J)	LOT 6 HEREON		(T)	LOT 6 HEREON	LOTS 10 - 13 STAGE 1	
	(BF)	LOT 28 HEREON		(U)(UB)	LOT 6 HEREON	LOTS 2 - 5 & 7 - 13 STAGE 1	
RIGHT TO DRAIN WATER	(AC)(A)	LOT 101 HEREON	WDC	RIGHT TO DRAIN SEWAGE	(L)	LOT 6 HEREON	LOTS 2 - 5 & 7 - 13 STAGE 1
RIGHT TO CONVEY WATER & RIGHT TO DRAIN SEWAGE	(WA)	LOT 6 HEREON		(Y)	LOT 6 HEREON	LOTS 8 & 9 STAGE 1	
EXISTING NO BUILD AREA (CREATED STAGE 1) TOTAL: 8.1124 Ha LOT 200: 5.2071 Ha AREAS MARKED A, F, G, J, L, R, T, U, Y, Z, AC, BC, BE, FA - FD, NB, RA, UB, WA, WB & ZA	U	LOT 6 HEREON	WDC	FOR FIRE FIGHTING SUPPLY RIGHT	(X)	LOT 6 HEREON	LOTS 2 - 5, 24 & 25 STAGE 1
				(ZA)	LOT 101 HEREON	LOTS 7 - 15 STAGE 1	
				(Z)	LOT 6 HEREON	LOTS 7 - 15 STAGE 1	



PROPOSED CANCELLATION OF AMALGAMATION CONDITION
 PURSUANT TO SECTION 241(3) OF THE RMA 1991
 THE WHANGAREI DISTRICT COUNCIL CANCELS THE AMALGAMATION CONDITIONS REQUIRING LOT 200 STAGE 1, LOT 100 STAGE 1 & 102 STAGE 1 TO BE HELD IN THE SAME RECORD OF TITLE.

PROPOSED AMALGAMATION CONDITION
 PURSUANT TO SECTION 220 (i)(b)(ii) & (iii) OF THE RMA 1991
 THAT LOTS 6, 100 & 101 HEREON AND LOT 102 STAGE 1 BE HELD IN THE SAME RECORD OF TITLE.

EXISTING CONSERVATION COVENANTS PURSUANT TO S77 RESERVES ACT 1977		
SHOWN	UNDERLYING PARCEL	AREA
NB	LOT 6 HEREON	0.0545 Ha

CAUTION:

- THIS DRAWING SHOULD NOT BE AMENDED MANUALLY.
- AREAS & DIMENSIONS ARE APPROXIMATE ONLY AND ARE SUBJECT TO FINAL SURVEY.
- THE VENDOR & PURCHASER MUST CONTACT THE SURVEYOR IF SALE & PURCHASE AGREEMENTS ARE ENTERED INTO USING THIS PLAN.
- SERVICES MUST NOT BE POSITIONED USING THIS PLAN.
- DO NOT SCALE OFF DRAWINGS.
- THIS PLAN IS COPYRIGHT TO REYBURN & BRYANT (1999) LIMITED.
- DESIGNED BY REYBURN & BRYANT - WHANGAREI - NEW ZEALAND
- 04m 2014-2016 RURAL AERIAL SOURCED FROM AERIAL SURVEYS LTD INFORMATION AVAILABLE ON LINZ DATA SERVICE.
- BOUNDARIES SOURCED FROM QUICKMAP. COORDINATES IN TERMS OF MOUNT EDEN 2000.

TOTAL AREA: 14.0600 Ha
 COMPRISED IN: RT 854407
 THIS SITE IS ZONED 'UTE' AND THE BUILDING SETBACKS ARE THUS: 20m FROM ROAD BOUNDARIES, 50m MAXIMUM FROM ANOTHER BUILDING OR BUILDING SITE.

SHEET SCHEDULE			
OVERALL	-	SHEET 01	
STAGE 1	-	SHEET 02	
STAGE 2	-	SHEET 03	

DATE	AUGUST 2020	SCALE	1:2500 @A3
NO.	S14744	SHEET	3/3
		REV.	V

TITLE
**STAGE 2
 PROPOSED SUBDIVISION
 OF LOT 2 DP 528544 & PROPOSED EASEMENT
 OVER LOT 3 DP 436342**

CLIENT
 McGregor
 422 THREE MILE BUSH ROAD,
 KAMO, WHANGAREI

REV	DATE	DESCRIPTION
V	21.08.20	CHANGED EASEMENTS - PL/MW
U	08.07.20	CHANGED EASEMENTS - PL/MW
T	22.06.20	ADD CONS COVTS & CHANGE LOT 23 - PL/SB/MW
B	05.12.17	REDESIGN - CC/SB

REF. DATA : 14794

reyburn & bryant
 Ph: 09 438 3563 PO Box 191, Whangarei 0140
 7 Selwyn Ave, Whangarei www.reyburnandbryant.co.nz

LOCAL AUTHORITY: WHANGAREI DISTRICT COUNCIL